

Proposed Amendments to the

Comhairle Chontae Mhaigh Eo

Mayo County Council

Road Traffic Special Speed Limits Bye-laws 2018

September 2023

Proposed Amendments to the

Comhairle Contae Mhaigh Eo

Mayo County Council

Road Traffic Special Speed Limits Bye-Laws 2018

The following amendment to the Schedule is proposed:

1	'National Roads'	1.3 Sixth Schedule – 80km/h (Page 109) Item 7	Insert the text: <i>“B. The N60 from a point 673m east of its junction with the R373 at Kilkenny (517,503.625E, 789,704.135N), to a point 90m east of its junction with the L-5783 at Roemore (518,975.154E, 789,176.235N). (Drg. No. 8030-N60-BL-01 Rev 2)”</i>
---	-------------------------	--	--

The following amendment to the Drawings is proposed:

1	'National Roads'	Replace: <i>Drg. No. 8030-N60-BL-01 Rev.1</i> with: <i>Drg. No. 8030-N60-BL-01 Rev.2</i>
---	-------------------------	---

Proposed Amendments to the

Comhairle Contae Mhaigh Eo

Mayo County Council

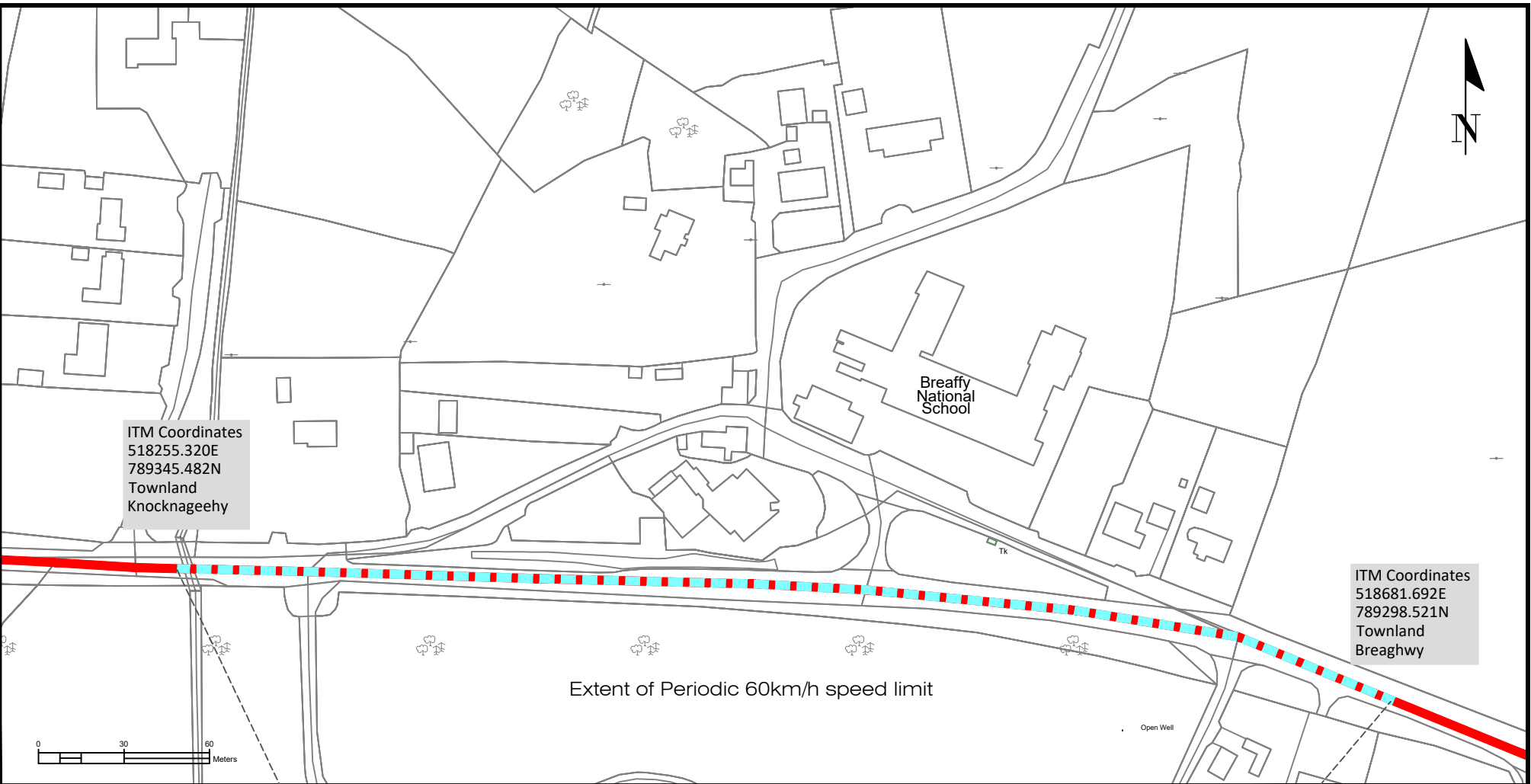
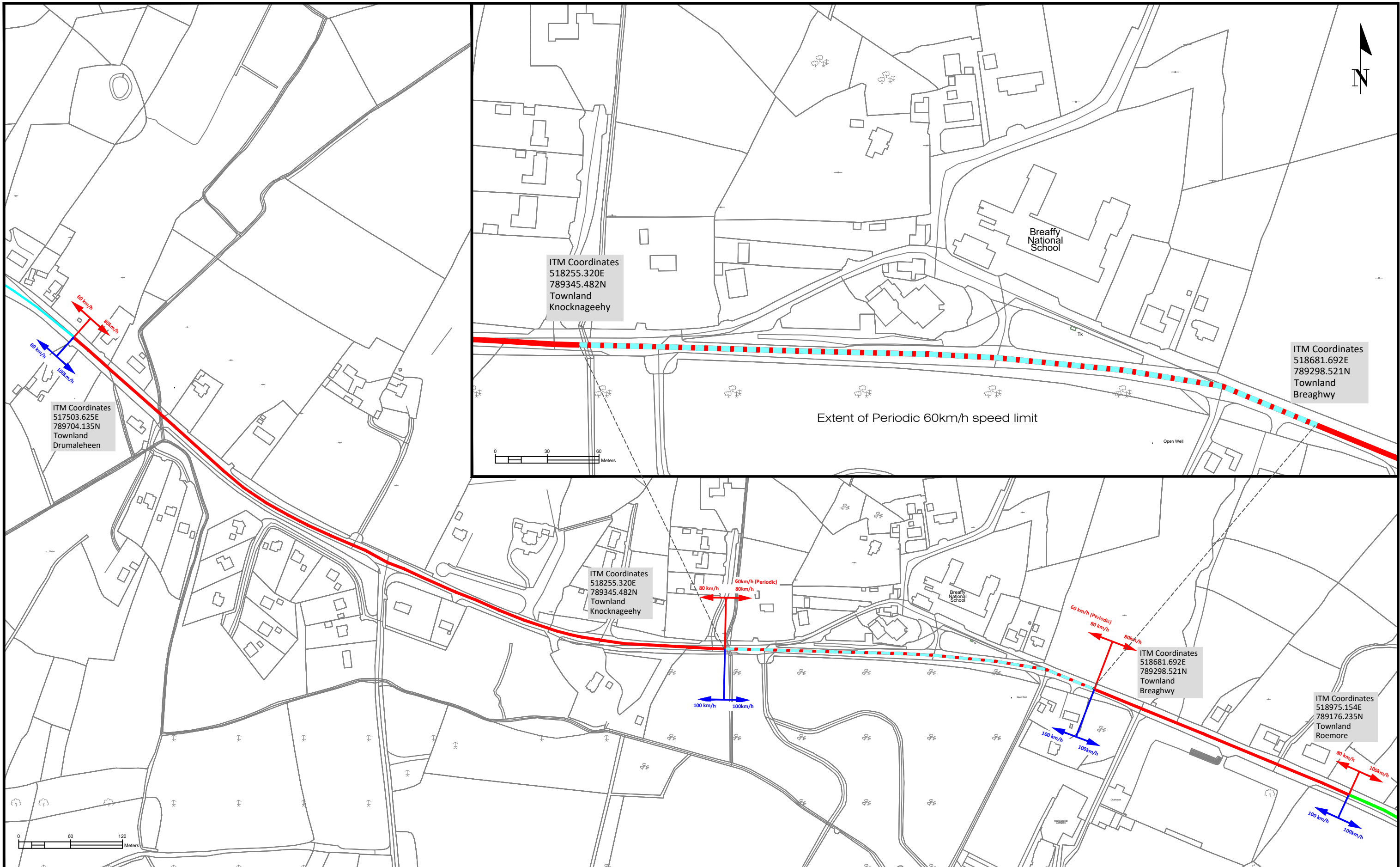
Road Traffic Special Speed Limits Bye-Laws 2018

The following amendment to the Schedule is proposed:

1	'National Roads'	1.7 Tenth Schedule – Periodics-Special Speed Limit of 60km/h (Page 116) Item 5	Insert the text: <i>"5. The N60 at a Breaffy National School, Breaffy: A. The N60 from a point 407m east of its junction with the L5757 at Cottage Road (518,255.320E, 789,345.482N), to a point 228m west of its junction with the L-5783 at Roemore (518,681.692E, 789,298.521N). (Drg. No. 8030-N60-BL-01 Rev 2)"</i>
---	-------------------------	---	--

The following amendment to the Drawings is proposed:

1	'National Roads'	Replace: <i>Drg. No. 8030-N60-BL-01 Rev.1</i> with: <i>Drg. No. 8030-N60-BL-01 Rev.2</i>
---	-------------------------	---



ITM Coordinates
517503.625E
789704.135N
Townland
Drumaleheen

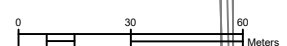
ITM Coordinates
518255.320E
789345.482N
Townland
Knocknageehy

ITM Coordinates
518681.692E
789298.521N
Townland
Breaghwy

ITM Coordinates
518255.320E
789345.482N
Townland
Knocknageehy

ITM Coordinates
518681.692E
789298.521N
Townland
Breaghwy

ITM Coordinates
518975.154E
789176.235N
Townland
Roemore



Rialtas na hÉireann
Government of Ireland

Tionscadal Éireann
Project Ireland
2040

An Roinn Iompair
Department of Transport

Comhairle Contae Mhaigh Eo
Mayo County Council

TII
Bonnagar Iompair Éireann
National Roadworks Institute

Includes Taithe Éireann data reproduced under Licence Number
CYA15043006 / Mayo County Council.

Unauthorized reproduction infringes Taithe Éireann and Government of Ireland copyright.
© National Mapping Division of Taithe Éireann, 2023.

Notes:
1. This drawing is the property of the Mayo National Roads Office. It is a confidential document and must not be copied, used, or its contents divulged without prior written consent.
2. Verifying Dimensions - The contractor shall verify dimensions against each other drawings or site conditions as pertain to this part of the work.
3. Existing Services - Any information concerning the location of existing services indicated on this drawing is intended for general guidance only. It shall be the responsibility of the contractor to determine and verify the exact horizontal and vertical alignment of all cables, pipes etc. (both underground and overhead) before work commences.
4. Issue of Drawings - Hard copies, .dwg and .pdf will form a controlled issue of the drawing. All other formats (.dwg, .dxf etc.) are deemed to be an uncontrolled issue and any work carried out based on these files is at the recipient's risk. Mayo NRO will not accept any responsibility for any errors arising from the use of these files, either by human error by the recipient, listing of on-dimensional measurements, compatibility issues with the recipient's software, and any errors arising when these files are used to aid the recipient's drawing production, or setting out on site.
5. Datum - Ordnance Survey Datum, Mean Head.

LEGEND

					Extents of 30km/h Special Speed Limit
					Extents of 50km/h Special Speed Limit
					Extents of 50km/h Periodic Special Speed Limit
					Extents of 60km/h Special Speed Limit
					Extents of 60km/h Periodic Special Speed Limit
					Extents of 80km/h Special Speed Limit
					Extents of 100km/h Default Speed Limit
					Extents of 100km/h Special Speed Limit
					Extents of 120km/h Special Speed Limit
					Extents of 60km/h Temporary Road works Speed Limit

No	Amendment / Issue	Date	By	Checked
0	New drawing	31/05/2023	DD	SOM

Mayo National Roads Office
Oifig Bhóithre Náisiúnta Mhaigh Eo
Glennpark House, The Mall, Castlebar, County Mayo

Head of Roads:
P. Dolan, B.E.
Senior Engineer:
P. Hyland, B.E., C.Eng.
Tel: 094 906 4321
Email: nro@mayococo.ie
https://www.mayo.national-roads-office

Designed: MAYONRO | Drawn: DD | Checked: SOM | Date: May 2023

Project: **N60 Breaffy Active Travel & Safety Measures Scheme**
Title: **Speed Limit Proposals**
Site Location - Proposed N60 Speed Limit Breaffy Road, Castlebar, Co. Mayo
Scale: Plan 1:2,000 @ A1
Dwg NRO / MO - Breaffy N60 AT&SM | Revision No: No: Scheme - Speed Limits - 01 | 0